



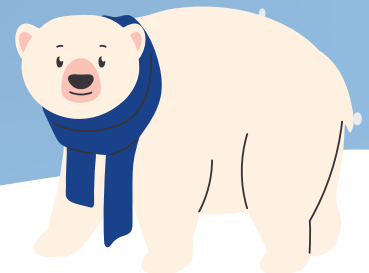
Our House

DROP OFF INSTRUCTIONS Adopt A Family

- **Please do not wrap any gifts!** Parents will wrap their own gifts. You are welcome to include wrapping paper, but it is not required.
- **Label, label label!** Help us stay organized by labeling items with each family member's name, and put your family's number on everything!
- We will put all of your family's items in large black trash bags when you arrive. If you would like you can already have your gifts in bags, but **please leave out gift cards.**
- Please drop off your gifts during the times below. We will have staff available to take gifts at this time.
- When you arrive, please tell the guard you have Adopt-A-Family gifts. Make sure to mention Adopt-A-Family specifically!

DROP OFF TIMES

8 am - 11 am and 2 pm - 5 pm on:
Sunday, December 10th
Monday, December 11th
Tuesday, December 12th



QUESTIONS?

Email caroline@ourhouseshelter.org or call (501) 374-7383 ext. 120